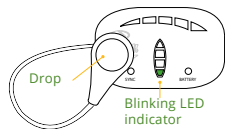


WIRELESS CONTROLLER

In order to access the menu, you must proceed with the following indications, always with the board initially disconnected.



A) SYNCHRONIZATION

1. Place the Drop over the Onean logo and press on it, as indicated in the following image.
2. Continue to press on the Drop. The led display in the Battery indicators will begin to progressively light up. Each light indicates a different setting.
3. Once a selection is chosen, press on the Drop again to access the submenu. The Wireless Controller will enter search mode until a board is detected and the sync light will turn on.
4. Place the Battery inside its compartment and the sync light will blink indicating a successful synchronization.
5. Once the Wireless Controller is linked with the board it will turn off and the settings will be stored.
6. In order to activate the jet unit, press on the Drop with the index finger and thumb.
7. This board has 3 different levels.

B) POWER OF THE JET UNIT

In order to activate the Jet Unit, press on the Drop. The Manta has 3 levels: 50% , 100% and off.

50% of power

To begin at 50% of the power press one time on the Drop.

100% of power

To proceed with 100% of the power press on the Drop once again.

Stop

To stop the Manta press on the Drop a third time.

*If you are on 50% (level1) you must press two times to stop.

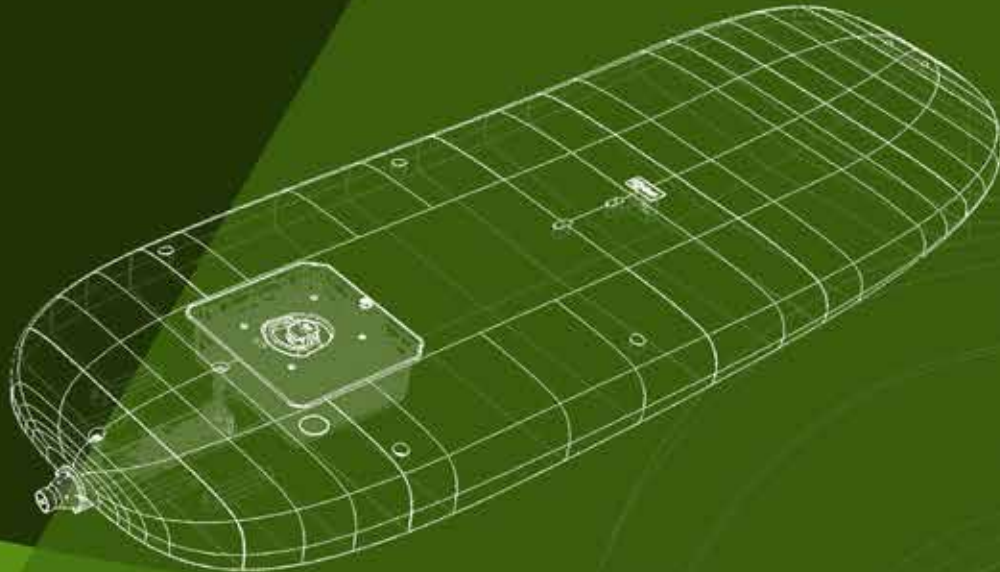
Leds	Wattios	Visualization
1st click	400w	
2nd click	750w	
3rd click	STOP	



#ONEAN #ONEANBOARDS

Manta

Quick start guide



We're here to help

www.onean.com | support@onean.com

@oneanboards

fb.me/oneanboards

@oneanboards

www.funshop.at

WELCOME TO THE MANTA QUICK START GUIDE

Thank you for purchasing a Manta Board.

This board has been designed for quick and easy assembly. Please follow the instructions in this Quick Guide. The first assembly of the unit will take approximately 15 min. It is extremely important that these procedures are carried out correctly.

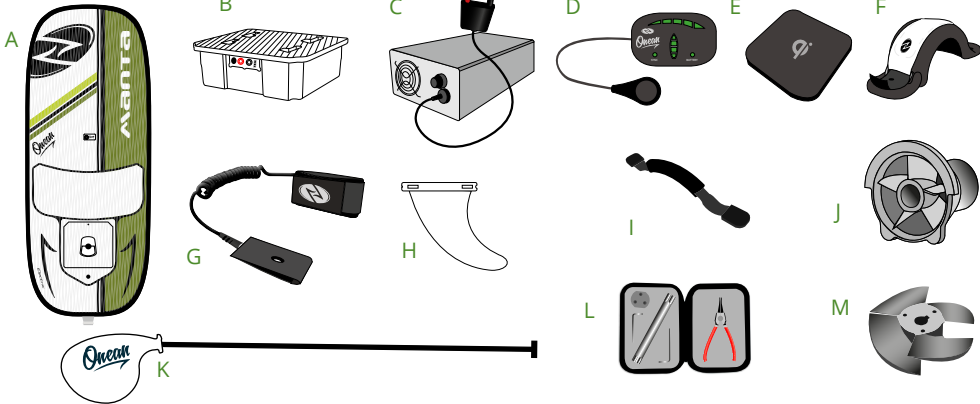
This guide contains information about the assembly and the use of the Manta.

MAIN SECURITY CHECKS

- Always check the unit before entering the water
- Avoid entering the water through wave brake zones
- Always wear the leash attached

WHAT COMES IN THE BOX?

- A Manta Board with Jet Unit
- B Lithium Ion Battery
- C Battery Charger
- D Wireless Controller
- E Qi Charger
- F 1 x Thin Footstraps
- G Leash + Security Key



Please read the entire guide before using this product. It is responsibility of the customer to use the product supplied by AquilaBoards in a secure way following the indicated guidelines. The company won't be responsible for any damages occurred to the customer or the unit due to inappropriate use.

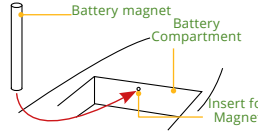
Need more help? We're only an email away
support@onean.com

- Never insert hands or feet inside the jet unit
- Be aware that the board doesn't have a break zones
- Don't touch the JetUnits stainless steel tube after use

INITIAL ASSEMBLY AND CONFIGURATION

INSERT THE BATTERY MAGNET

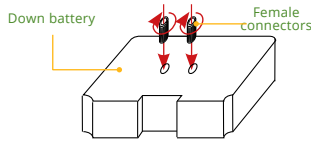
Before using the unit for the first time, the cylindrical magnet must be inserted in the hole inside the battery compartment.



INSERT FEMALE CONNECTORS

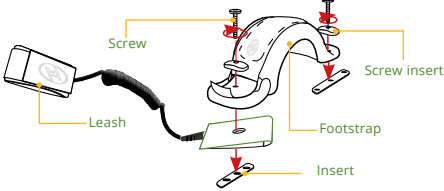
In the bottom part of the battery you will find two holes where the battery will be connected with the board.

Please screw both female connectors using a screwdriver.



POSITIONING LEASH AND FOOTSTRAP

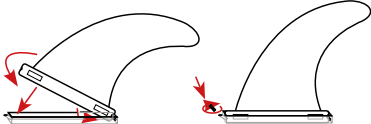
1. Place the leash over the front insert.
2. Place the footstrap over the leash and the back insert.
3. Place the screws through the screw inserts and hold the footstrap and the leash.
4. Align the holes. Screw and secure them.



INSERT THE FINS

In order to insert the fins, flip over the board and place it over a flat surface.

1. Insert the fin inside the fin box as shown in the picture.
2. Screw the fins to the insert and verify its correct positioning.

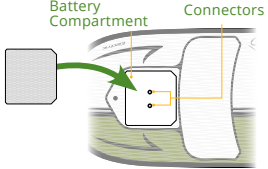


BATTERY CONNECTION

1. Please check that the watertight seal and the frame are clean, without sand or signs of deterioration. Check the battery compartment and make sure it doesn't contain any water.
2. Turn the drain cap 360° counter-clock wise. Place the Battery over the pad, near the compartment where the battery must be inserted.
3. Grab the Battery by the top handle and insert it in the compartment. The connection receptor will light up indicating a successful connection.
4. Once the Battery is inserted in the board,

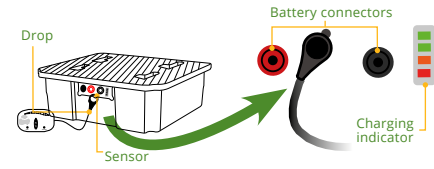


- insert the four pins to lock the Battery. If the pins do not enter easily, please, press down on the battery so the watertight seal is sufficiently compressed.
5. Turn the drain cap clock wise until locked to assure water tightness.



BATTERY CHARGE

Place the drop near the battery display, the led indicator will show the remaining battery.



Visualization	Charge%
	20%
	40%
	60%
	80%
	100%

RECHARGING THE BATTERY



Always connect the charger to the wall outlet before connecting it to the battery.

It is extremely important to respect the connector colors (red with red and black with black). Reverse polarity could damage the battery irreversibly.

